

2021 TREE SALE ORDER FORM



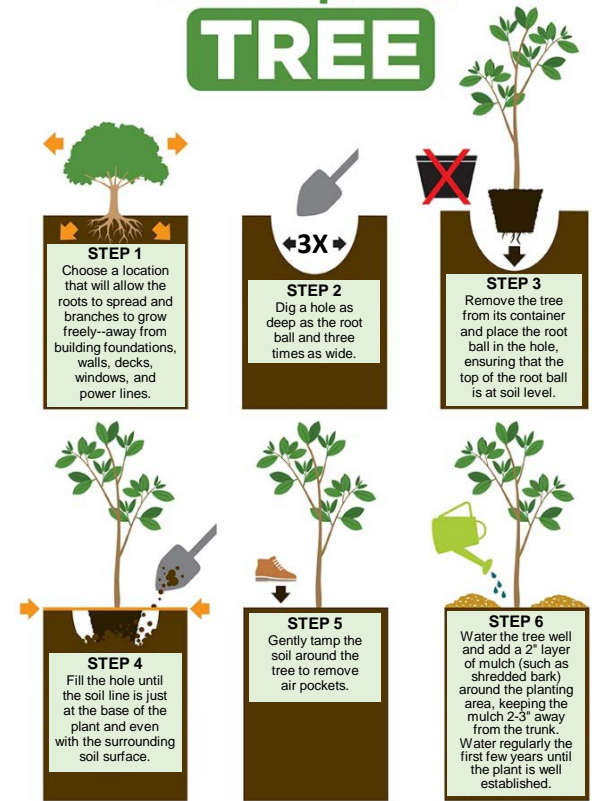
NAME _____

ADDRESS _____

PHONE _____

EMAIL _____

How to plant a TREE



Orders are due by **SEPTEMBER 24, 2021**. Trees (4' to 6' in height) and shrubs (3' to 4' in height) will be delivered in three-gallon containers to the City of Xenia Public Service Center, 966 Towler Road, Xenia, for pickup on **SATURDAY, OCTOBER 16, 2021, from 9 a.m. to 12 noon**. Order forms should be dropped off or mailed to the following: **City of Xenia Tree Committee, Attn: Michelle Johnson, City Clerk, 107 E. Main Street, Xenia, OH 45385**. Payments may be made via cash/check/money order/credit card. **DO NOT MAIL CASH**. Cash, check, or money order payments may be dropped off at the City Administration Building with your order form. If you wish to make a credit card payment, email your order form to mjohnson@ci.xenia.oh.us and make your credit card payment using the City's Payment Service Network (you will have to create an account):

<https://www.paymentservicenetwork.com/Login.aspx?acc=RT23320>

Terms and Conditions: Trees/shrubs may only be planted on private property and not in the tree lawn (area between the sidewalk and street). No delivery, planting, or warranty is provided by the City of Xenia. Trees not picked up by noon on Saturday, October 16, 2021, will be considered a donation to the City and will be planted in a City park. **All proceeds will be used to help with maintenance and replacement of City-owned trees.**

TREES	TREES AND SHRUBS	FEATURES	MATURE HEIGHT	MATURE WIDTH	SUN/SHADE PREFERENCE	COST PER TREE	QTY	SUBTOTAL
		Black Gum <i>(Nyssa sylvatica)</i>	Medium-size deciduous tree. Grows in rounded shape with straight trunk. Tiny flowers in the spring give way to small dark blue fruits that attract birds and other wildlife.	30-50 feet	20-30 feet	No preference	\$39	
	Flowering Dogwood <i>(Cornus florida)</i>	Small deciduous tree. Often wider than it is tall when mature. About 20 flowers are produced in each dense, rounded flower-head. Leaves turn red-brown in the fall.	30-40 feet	30-40 feet	Sun, Part Shade	\$39		
	Pawpaw <i>(Asimina triloba)</i>	Small deciduous tree. Red-purple flowers in early spring. Produces large, yellowish-green to brown edible fruit. Leaves turn yellow in the fall.	15-30 feet	15-20 feet	Sun or Shade	\$39		
	Sycamore <i>(Platanus occidentalis)</i>	Large deciduous tree makes good shade tree in a large lawn. Bark has distinct camouflage pattern. 1" seed balls fall to the ground in the spring to be enjoyed by wildlife.	up to 100 feet	up to 100 feet	No preference	\$39		
	Tulip Poplar <i>(Liriodendron tulipifera)</i>	Very popular tall, fast-growing tree known for its straight trunk and high canopy. Orange and green flowers attract hummingbirds in the spring. Leaves turn yellow in the fall.	70-90 feet	35-50 feet	Full Sun	\$39		
	American Plum <i>(Prunus americana)</i>	This small, fast-growing tree produces white flowers in the spring and edible fruit that is ready for harvest in August. Can be planted as a windbreak.	up to 12 feet	up to 20 feet	Full Sun	\$39		

TURN OVER TO ORDER SHRUBS AND ADDITIONAL TREES AND/OR COMPLETE YOUR TOTAL

TREES	Umbrella Magnolia <i>(Magnolia tripetala)</i>	Very large leaves at the ends of branches resemble an umbrella. Large, showy spring flowers and rosy red fruits add four seasons of interest.	up to 30 feet	up to 30 feet	No preference	\$39		
	Bur Oak <i>(Quercus macrocarpa)</i>	Massive shade tree when mature. Large acorns with fringed caps attract birds and small mammals. Host plant for many species of butterfly.	up to 100 feet	up to 80 feet	Full Sun, Part Shade	\$39		
	Chinkapin Oak <i>(Quercus muehlenbergii)</i>	Large shade tree that performs well in alkaline soil. Glossy, coarsely-toothed leaves are yellow-green and comparatively small. Excellent host plant.	up to 80 feet	up to 70 feet	Full Sun, Part Shade	\$39		
	Shingle Oak <i>(Quercus imbricaria)</i>	Leaves are shiny and lance-shaped, unlike most oaks. Pyramidal shape in youth, broader rounded shape in old age. Excellent host plant.	up to 60 feet	up to 60 feet	Full Sun, Part Shade	\$39		
	Swamp White Oak <i>(Quercus bicolor)</i>	Faster growing oak that can tolerate poorly drained sites, alkaline soil and dry sites. Excellent host plant.	up to 80 feet	up to 80 feet	Full Sun, Part Shade	\$39		
	Kentucky Coffee Tree <i>(Gymnocladus dioicus)</i>	Features very large binately compound leaves and large seed pods. Tolerates drought and pollution. Not typically found in nurseries.	up to 75 feet	up to 50 feet	Full Sun	\$39		

	TREES AND SHRUBS	FEATURES	MATURE HEIGHT	MATURE WIDTH	SUN/SHADE PREFERENCE	COST PER SHRUB	QTY	SUBTOTAL
SHRUBS	Red Twig Dogwood <i>(Cornus sericea)</i>	Attractive large erect shrub with yellowish-white flowers in spring, bluish-white fruit in summer, and dark red stems in winter.	up to 10 feet	up to 10 feet	Part Shade	\$34		
	Buttonbush <i>(Cephalanthus occidentalis)</i>	Multi-stemmed shrub with glossy, dark green leaves. Unusual blossoms are white 1" globes. Important food source for birds and pollinators.	up to 12 feet	up to 12 feet	Part Shade, Shade	\$34		
	Elderberry <i>(Sambucus nigra)</i>	Large, multi-stemmed rounded shrub. The flat-topped, white, fragrant flowers appear in early summer followed by clusters of purple fruit.	up to 12 feet	up to 12 feet	No preference	\$34		
	American Beautyberry <i>(Callicarpa americana)</i>	Clusters of glossy, iridescent purple fruit hug the branches in the fall and winter. Important for many birds including Northern Bobwhite.	up to 8 feet	up to 8 feet	Full Sun, Part Shade	\$34		SOLD OUT
	Shadblow Serviceberry <i>(Amelanchier canadensis)</i>	Small tree or large shrub produces white blooms in early spring followed by edible red fruit important to many birds including Cedar Waxwing.	up to 20 feet	up to 15 feet	Full Sun, Part Shade	\$34		
	Carolina Sweetshrub <i>(Calycanthus floridus)</i>	Dense rounded shrub, aka Carolina allspice, has unusual, strap-like, maroon to reddish flowers with a sweet banana-strawberry fragrance.	up to 12 feet	up to 12 feet	Part Shade	\$34		
	Wafer Ash (aka Hop Tree) <i>(Ptelea trifoliata)</i>	Small tree or large shrub, produces small fragrant flowers and wafer-like winged seeds. This is not a true ash and is unaffected by emerald ash borer.	up to 20 feet	up to 20 feet	No preference	\$34		
	Witchhazel (Common) <i>(Hamamelis virginiana)</i>	Small tree or large shrub, often multi-stemmed with crooked spreading branches. Fragrant yellow flowers appear in fall.	up to 25 feet	up to 20 feet	Part Shade, Shade	\$34		
	Black Haw <i>(Viburnum prunifolium)</i>	Attractive dark green foliage becomes reddish purple in fall. Many showy flowers and small blue-black fruit. Supports many birds and pollinators.	up to 15 feet	up to 10 feet	Full Sun, Part Shade	\$34		

Payment made via Cash Check # _____ Money Order Credit Card

GRAND TOTAL

I AGREE TO THE TERMS AND CONDITIONS AS NOTED ABOVE, WHICH IS VALIDATED UPON PAYMENT OF THE TREES AND/OR SHRUBS ORDERED HEREIN.

All trees and shrubs will be purchased from a local grower who specializes in locally sourced native trees.